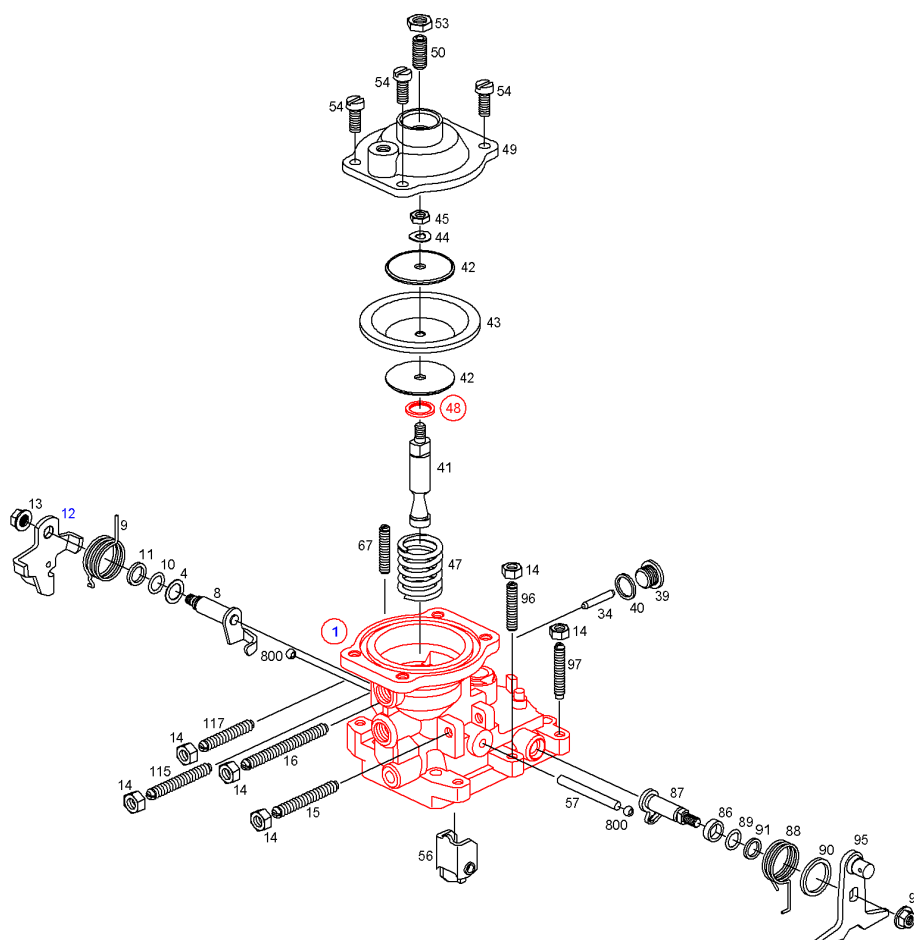




## Replacing Parts

Product 0 460 494 255 - Distributor injection pump - VE4/9F2150R281  
1 467 134 246 - MANIFOLD-PRESSURE COMP.



Position	Order number	Info	Quantity	Designation
1	1 465 132 665	B	1	STOP HOUSING
4	1 200 101 640	B	1	SHIM
8	1 463 161 843	B	1	LEVER SHAFT
9	1 464 651 423	A	1	COILED SPRING
10	1 460 210 301	A	1	O-RING
11	1 460 101 620	B	1	SHIM
12	1 461 904 457	B	1	STOP LEVER
13	1 463 315 310	B	1	FLANGE NUT
14	2 915 012 007	B	6	HEXAGON NUT, ISO 4032 - M6-8-A
15	1 463 402 419	B	1	HEADLESS SETSCREW
16	1 463 402 419	B	1	HEADLESS SETSCREW
34	1 463 105 416	B	1	GUIDE PIN, 23,8 MM
34	1 463 105 363	B	1	GUIDE PIN, 24,3 MM
34	1 463 105 364	B	1	GUIDE PIN, 24,8 MM
39	1 463 460 300	B	1	SCREW PLUG

# Replacing Parts

1 467 134 246 - MANIFOLD-PRESSURE COMP.

11.11.2013

19:47:13

40	1 460 105 309	A	1	FLAT SEAL RING
41	1 463 123 471	B	1	ADJUSTING PIN
42	1 460 500 305	B	2	PLATE WASHER
43	1 460 503 304	A	1	DIAPHRAGM
44	2 916 069 083	B	1	SPRING LOCK WASHER, DIN 137 - A6-FSt
45	2 915 051 147	B	1	HEXAGON NUT, DIN 439 - BM6-06
47	1 464 617 711	A	1	COMPRESSION SPRING
47	1 464 617 710	A	1	COMPRESSION SPRING
47	1 464 617 708	A	1	COMPRESSION SPRING
<b>48</b>	<b>1 460 209 906</b>	<b>B</b>	<b>1</b>	<b>SELECTION GROUP SPACER BUSHING</b>
49	1 465 530 900	B	1	CLOSING COVER
50	1 463 414 320	B	1	THREADED PIN
53	2 915 032 001	B	1	HEXAGON NUT, ISO 8675 - M8x1-04
54	2 910 022 193	B	4	CHEESE HEAD SCREW, DIN 84 - AM6x12-8.8
56	1 461 905 721	B	1	CONTROL LEVER
57	1 463 101 311	B	1	STRAIGHT PIN
67	1 463 414 328	B	1	HEADLESS SETSCREW
86	1 460 209 366	B	1	SHIM RING
87	1 463 151 311	B	1	LEVER SHAFT
88	1 464 651 398	A	1	COILED SPRING
89	1 460 210 313	A	1	O-RING
90	1 460 209 345	B	1	SUPPORT RING
91	1 460 200 332	B	1	SHIM
92	1 463 314 309	B	1	FLANGE NUT
95	1 461 921 312	B	1	STOP LEVER
96	1 463 400 311	B	1	HEADLESS SETSCREW
97	1 463 402 349	B	1	HEADLESS SETSCREW
115	2 912 031 209	B	1	HEADLESS SETSCREW, ISO 4766 - M6x40-22H
117	2 912 031 209	B	1	HEADLESS SETSCREW, ISO 4766 - M6x40-22H
800	1 463 230 302	B	2	BALL

## Explanations

A	Wear part
B	Service part